

Errata For Elephant and I Quilt and Pillow Pattern #80066

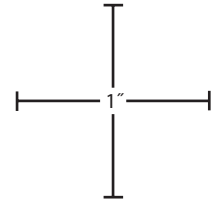
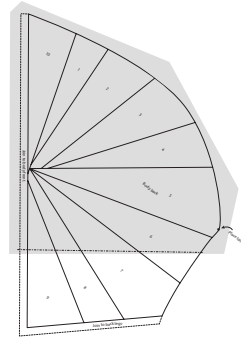
Elephant & I Pattern - Pullout pattern sheet:

Trunk Pattern: Ignore the bullet after the number 4 and the asterisk after number 5.

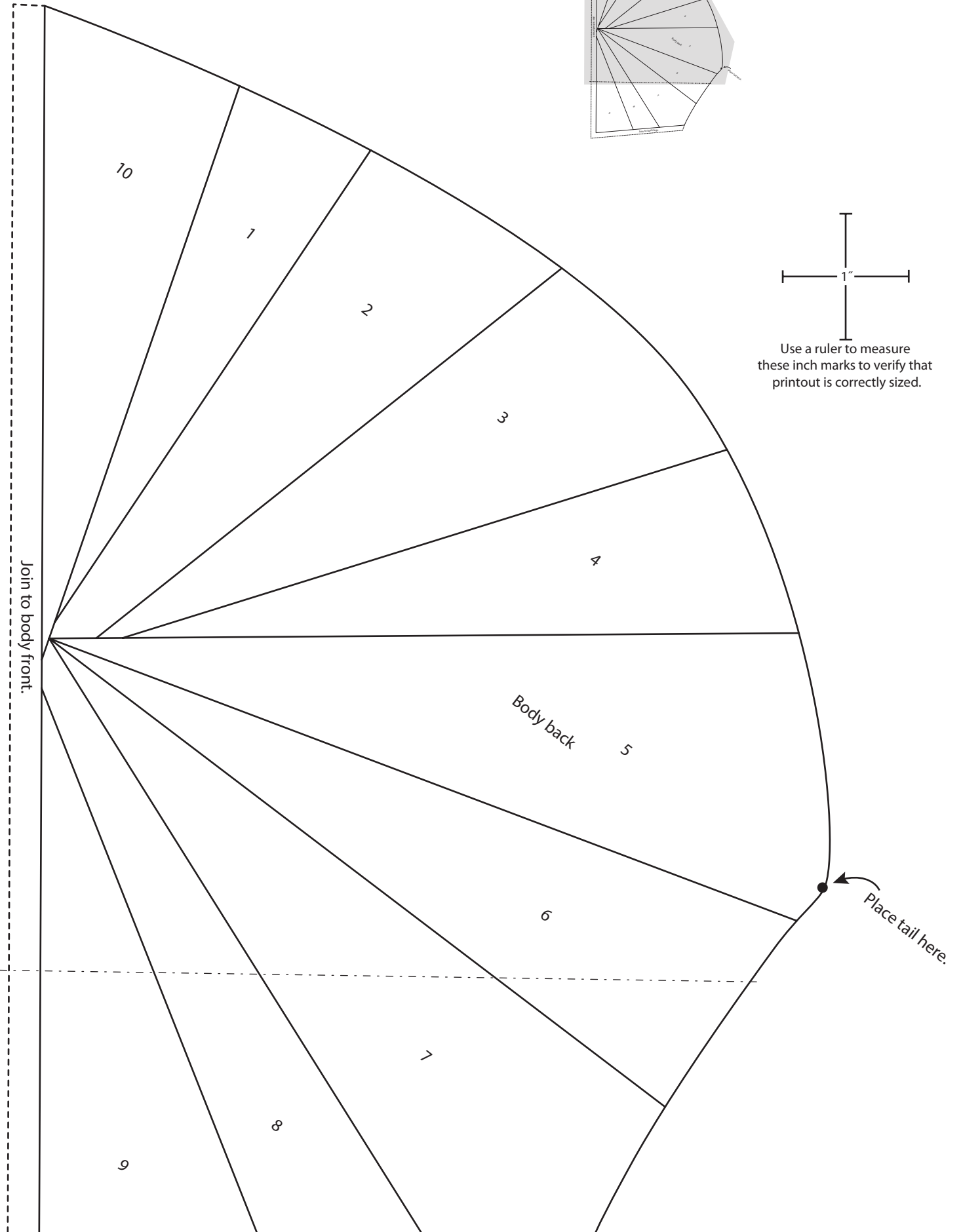
Body front and Body back patterns: If you wish to make the exact same elephant body as photographed in the pattern, use the attached PDF. It has been renumbered so the order of the paper piecing will create the center points as in the quilt photographed. If you plan to use the lines as guides only, as suggested in the pattern, you do not need this PDF.

Body back Pattern

To make complete pattern, join the following pages, following the diagram for reference.

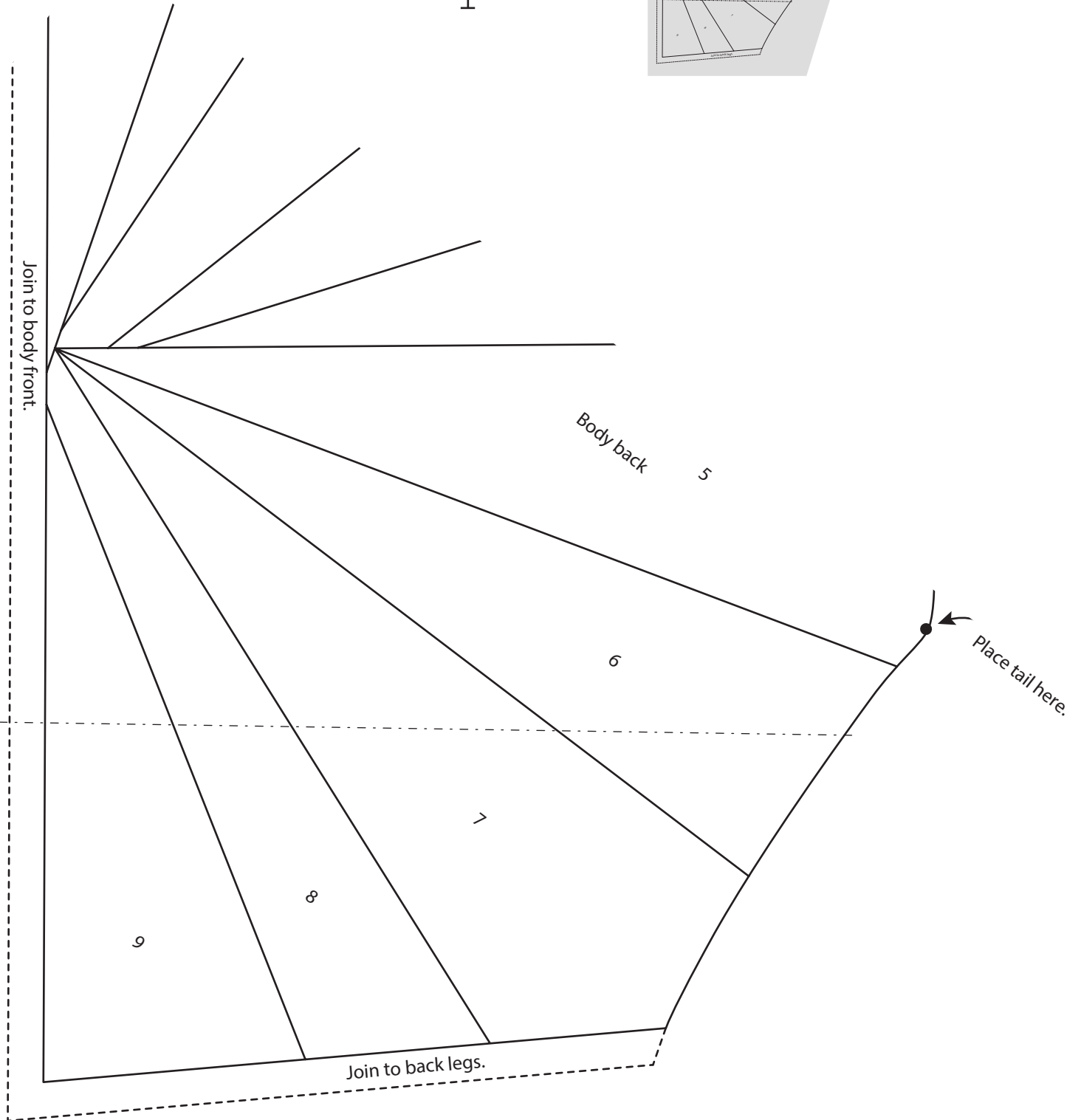
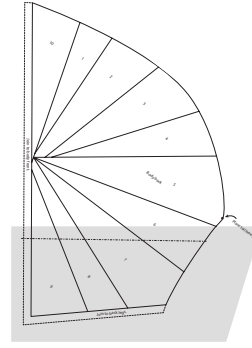
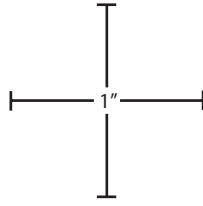


Use a ruler to measure these inch marks to verify that printout is correctly sized.

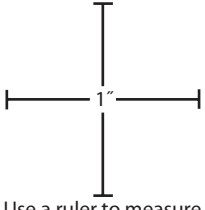


Body back Pattern

To make complete pattern, join the following pages, following the diagram for reference.



Body front Pattern



Use a ruler to measure these inch marks to verify that printout is correctly sized.

