

Errata for **Stunning 3-D Quilts Simplified** **#11395**

All Versions (print, eBook PDF, and ePub)

Print editions 1–5

Attached are the updated charts for each project with corrections to the finished sizes of the project quilts, the border yardage, number of cut strips for the borders, the border cut lengths, the backing yardage, the batting size, and the number of some of the cut triangles. Note that the finished quilt sizes on the first page of each project should also be corrected.

Additional corrections were made to the following projects and the corrected pages are attached.

Harmony

Page 43, The design chart has been corrected to match the quilt.

Windigo

Page 51, The design chart has been corrected to match the quilt.

Echoes, page 17:

Fabrics	Yardage requirements and width of strips		Number of triangles
	50½" × 69" quilt: Cut 3" strips.	70½" × 96½" quilt: Cut 4" strips.	
Light green	¼ yard	½ yard	37
Medium green	¼ yard	⅓ yard	26
Dark green	¼ yard	½ yard	30
Light blue	¼ yard	½ yard	37
Medium blue	¼ yard	½ yard	34
Dark blue	¼ yard	⅓ yard	22
Light aqua	¼ yard	½ yard	36
Medium aqua	¼ yard	⅓ yard	22
Dark aqua	¼ yard	½ yard	36
Light purple	¼ yard	½ yard	36
Medium purple	¼ yard	½ yard	32
Dark purple	¼ yard	⅓ yard	26
Light yellow	¼ yard	½ yard	29
Medium yellow	⅓ yard	⅝ yard	40
Dark yellow	⅓ yard	⅝ yard	46
Light pink	¼ yard	½ yard	29
Medium pink	⅓ yard	⅝ yard	46
Dark pink	⅓ yard	⅝ yard	40
Background	1¼ yards	1¾ yards	206
Border	¾ yard Cut 7 strips 3" × WOF.*	1⅛ yards Cut 9 strips 4" × WOF.	
Backing	3⅜ yards	6 yards	
Batting	58" × 78"	78" × 104"	

* WOF = width of fabric

Color Junction, page 21:

Fabrics	Yardage requirements and width of strips	Number of triangles
	70½" × 100½" quilt: Cut 3" strips.	
Light green	¾ yard	138
Medium green	¾ yard	122
Dark green	¾ yard	138
Light blue	¾ yard	132
Medium blue	¾ yard	138
Dark blue	¾ yard	122
Light red	¾ yard	132
Medium red	¾ yard	137
Dark red	¾ yard	121
Light yellow	¾ yard	140
Medium yellow	¾ yard	121
Dark yellow	¾ yard	137
Black	1 yard	164
Border	1 yard Cut 10 strips 3" × WOF.	
Batting	78" × 108"	
Backing	6½ yards	

* WOF = width of fabric

Reverie, page 25:

Fabrics	Yardage requirements and width of strips		Number of triangles
	50½" × 73½" quilt: Cut 3" strips.	70½" × 102½" quilt: Cut 4" strips.	
Light green	⅓ yard	⅔ yard	53
Medium green	½ yard	1 yard	84
Dark green	⅓ yard	⅔ yard	45
Light red	¼ yard	½ yard	28
Medium red	¼ yard	½ yard	27
Dark red	⅓ yard	⅔ yard	48
Light blue	½ yard	⅔ yard	62
Medium blue	½ yard	¾ yard	72
Dark blue	⅓ yard	⅔ yard	47
Light yellow	¼ yard	½ yard	30
Medium yellow	¼ yard	⅓ yard	24
Dark yellow	⅓ yard	⅔ yard	46
Background	1½ yards	2⅔ yards	298
Border	¾ yard Cut 7 strips 3" × WOF.*	1⅛ yards Cut 9 strips 4" × WOF.	
Backing	3⅜ yards	6¼ yards	
Batting	58" × 81"	78" × 110"	

* WOF = width of fabric

Chain Links, page 29:

Fabrics	Yardage requirements and width of strips		Number of triangles
	55½" × 82" quilt: Cut 3" strips.	77½" × 114½" quilt: Cut 4" strips.	
Light green	½ yard	¾ yard	66
Medium green	½ yard	1 yard	79
Dark green	¼ yard	½ yard	35
Light blue	¼ yard	⅓ yard	24
Medium blue	⅓ yard	⅝ yard	50
Dark blue	⅓ yard	⅝ yard	52
Light purple	½ yard	¾ yard	67
Medium purple	½ yard	⅔ yard	60
Dark purple	⅓ yard	½ yard	39
Light yellow	½ yard	⅔ yard	64
Medium yellow	⅓ yard	⅝ yard	41
Dark yellow	½ yard	⅔ yard	62
Background	2¼ yards	4 yards	441
Border	¾ yard Cut 8 strips 3" × WOF.*	1¼ yard Cut 10 strips 4" × WOF.	
Backing	5⅞ yards	7¼ yards	
Batting	63" × 90"	85" × 122"	

* WOF = width of fabric

Treble, page 33:

Fabrics	Yardage requirements and width of strips		Number of triangles
	68" × 94½" quilt: Cut 3" strips.		
Light green	1 yard		150
Medium green	1 yard		152
Dark green	1 yard		148
Light blue	1 yard		150
Medium blue	1 yard		146
Dark blue	1 yard		152
Light purple	1 yard		146
Medium purple	1 yard		146
Dark purple	1 yard		148
Light yellow	1 yard		148
Medium yellow	1 yard		150
Dark yellow	1 yard		146
Backing	5⅞ yards		
Batting	76" × 102"		

Stormy, page 37:

Fabrics	Yardage requirements and width of strips			Number of triangles
	48" × 63" quilt: Cut 3" strips.	57½" × 76" quilt: Cut 3½" strips.	67" × 88½" quilt: Cut 4" strips.	
Light yellow	¾ yard	1 yard	1¼ yards	124
Medium yellow	⅓ yard	½ yard	⅔ yard	52
Dark yellow	½ yard	⅔ yard	⅔ yard	64
Light aqua	¼ yard	¼ yard	⅓ yard	19
Medium aqua	½ yard	½ yard	⅔ yard	55
Dark aqua	½ yard	½ yard	⅔ yard	56
Back-ground	1¾ yards	2¼ yards	3 yards	327
Border	¾ yard Cut 6 strips 3" × WOF.*	⅞ yard Cut 8 strips 3½" × WOF.	1¼ yards Cut 9 strips 4" × WOF.	
Backing	3¼ yards	4⅞ yards	5½ yards	
Batting	56" × 71"	65" × 84"	75" × 96"	

* WOF = width of fabric

Harmony, page 41:

Fabrics	Yardage requirements and width of strips			Number of triangles
	60½" × 72" quilt: Cut 3" strips.	72½" × 86" quilt: Cut 3½" strips.	84½" × 100½" quilt: Cut 4" strips.	
Green	1 yard	1⅓ yards	1⅓ yards	166
Blue	1 yard	1¼ yards	1½ yards	153
Purple	1 yard	1¼ yards	1½ yards	145
Back-ground	3 yards	3¾ yards	5 yards	570
Border	¾ yard Cut 7 strips 3" × WOF.*	1 yard Cut 8 strips 3½" × WOF.	1¼ yards Cut 10 strips 4" × WOF.	
Backing	4 yards	5⅜ yards	7⅞ yards	
Batting	68" × 80"	80" × 94"	92" × 108"	

* WOF = width of fabric

Soulmates, page 45:

Fabrics	Yardage requirements and width of strips			Number of triangles
	60½" × 73½" quilt: Cut 3" strips.	72½" × 88" quilt: Cut 3½" strips.	84½" × 102½" quilt: Cut 4" strips.	
Green	⅔ yard	1 yard	1¼ yards	112
Red	½ yard	¾ yard	1 yard	87
Black	⅔ yard	1 yard	1¼ yards	97
Yellow	⅔ yard	1 yard	1¼ yards	107
Aqua	⅔ yard	1 yard	1¼ yards	101
Purple	½ yard	¾ yard	1 yard	82
Back-ground	2½ yards	3¼ yards	4¼ yards	470
Border	¾ yard Cut 7 strips 3" × WOF.*	1 yard Cut 8 strips 3½" × WOF.	1¼ yards Cut 10 strips 4" × WOF.	
Backing	4 yards	5½ yards	7⅞ yards	
Batting	68" × 81"	80" × 96"	92" × 110"	

* WOF = width of fabric

Windigo, page 49:

Fabrics	Yardage requirements and width of strips			Number of triangles
	55½" × 75" quilt: Cut 3" strips.	66½" × 89½" quilt: Cut 3½" strips.	77½" × 104½" quilt: Cut 4" strips.	
Light green	½ yard	½ yard	⅔ yard	56
Medium green	⅔ yard	1 yard	1¼ yards	108
Dark green	⅔ yard	1 yard	1 yard	79
Light orange	½ yard	⅝ yard	1 yard	68
Medium orange	⅓ yard	½ yard	1 yard	51
Dark orange	⅔ yard	1 yard	1¼ yards	117
Light aqua	½ yard	⅝ yard	1 yard	74
Medium aqua	½ yard	¾ yard	1 yard	79
Dark aqua	⅔ yard	1 yard	1¼ yards	117
Background	1¼ yards	1¾ yards	2¼ yards	231
Border	¾ yard Cut 7 strips 3" × WOF.*	1 yard Cut 8 strips 3½" × WOF.	1¼ yards Cut 10 strips 4" × WOF.	
Backing	4¾ yards	5½ yards	7¼ yards	
Batting	63" × 83"	74" × 97"	85" × 112"	

* WOF = width of fabric

Floated, page 53:

Fabrics	Yardage requirements and width of strips				Number of triangles
	40½" × 49" quilt: Cut 3" strips.	48½" × 58½" quilt: Cut 3½" strips.	56½" × 68" quilt: Cut 4" strips.	72½" × 87½" quilt: Cut 5" strips	
Light brown	½ yard	¾ yard	1 yard	1¼ yards	72
Medium brown	½ yard	¾ yard	1 yard	1¼ yards	72
Dark brown	½ yard	¾ yard	1 yard	1¼ yards	72
Back-ground	1¼ yards	1⅔ yards	2 yards	3 yards	218
Border	½ yard Cut 5 strips 3" × WOF.*	¾ yard Cut 6 strips 3½" × WOF.	1 yard Cut 7 strips 4" × WOF.	1¼ yards Cut 8 strips 5" × WOF.	
Backing	2⅞ yards	3¼ yards	3¾ yards	5½ yards	
Batting	48" × 57"	56" × 66"	64" × 76"	80" × 95"	

* WOF = width of fabric

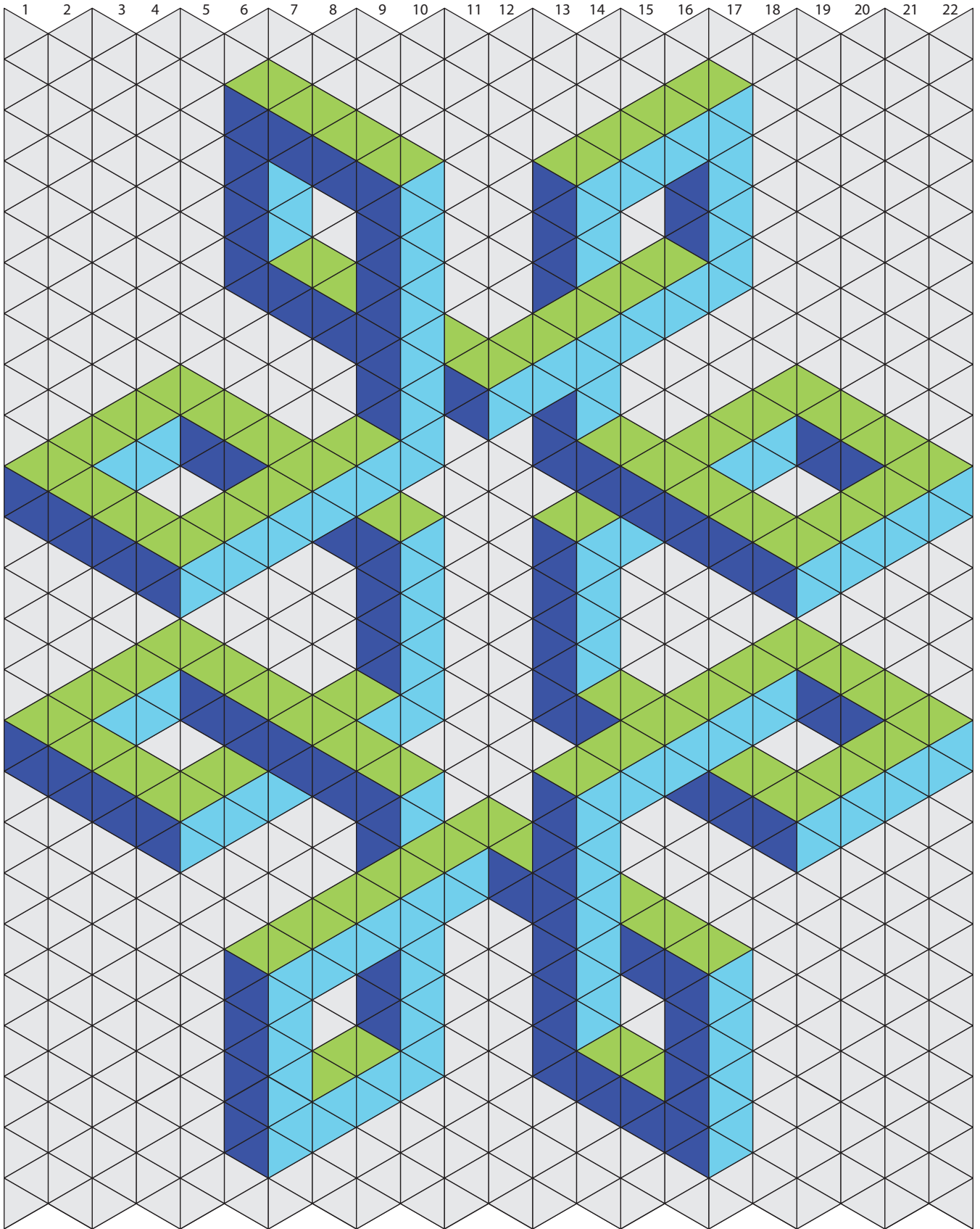
Quaternity, page 57:

Fabrics	Yardage requirements and width of strips			Number of triangles
	55½" × 64½" quilt: Cut 3" strips.	66½" × 77½" quilt: Cut 3½" strips.	77½" × 90½" quilt: Cut 4" strips.	
Light green	¼ yard	⅓ yard	⅓ yard	29
Medium green	½ yard	½ yard	⅔ yard	60
Dark green	⅓ yard	½ yard	½ yard	39
Light purple	¼ yard	½ yard	½ yard	34
Medium purple	½ yard	½ yard	⅔ yard	57
Dark purple	⅓ yard	½ yard	⅔ yard	48
Light orange	½ yard	¾ yard	1 yard	80
Medium orange	1 yard	1¼ yards	1½ yards	151
Dark orange	¾ yard	1 yard	1¼ yards	113
Background	1¼ yards	1⅔ yards	2¼ yards	229
Border	¾ yard Cut 6 strips 3" × WOF.*	1 yard Cut 8 strips 3½" × WOF.	1¼ yards Cut 9 strips 4" × WOF.	
Backing	3⅝ yards	4⅞ yards	7¼ yards	
Batting	64" × 72"	74" × 85"	85" × 98"	

* WOF = width of fabric

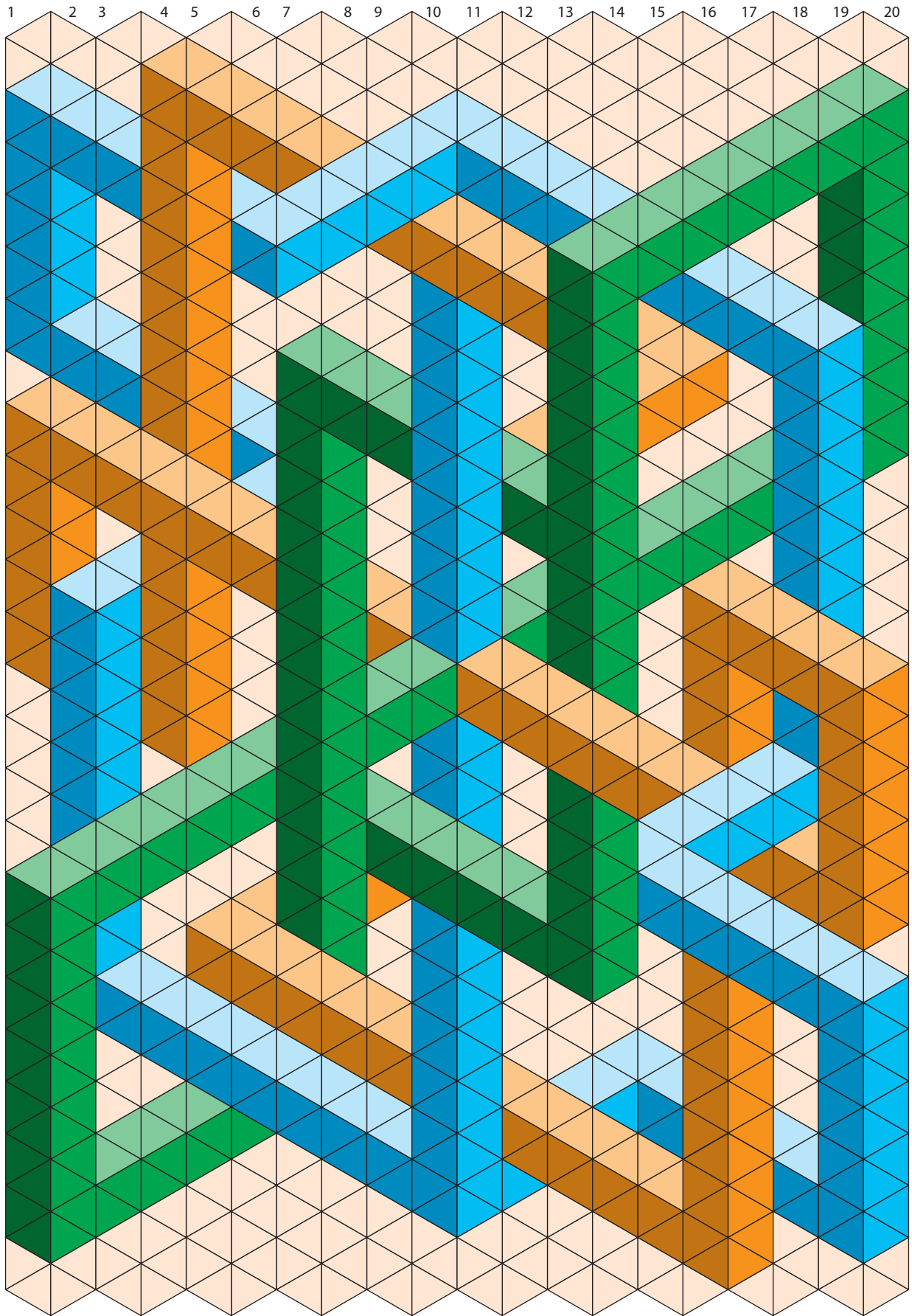
Knots Table Runner, page 61:

Fabrics	Yardage requirements and width of strips	Number of triangles
	20½" × 44" table runner: Cut 3" strips.	
Light blue	½ yard	84
Medium blue	⅓ yard	44
Dark blue	¼ yard	32
Background	⅔ yard	88
Backing	1⅝ yards	
Batting	28" × 52"	



Harmony design chart





Windigo design chart

