

Errata for
Boro & Sashiko, Harmonious Imperfection
#11379

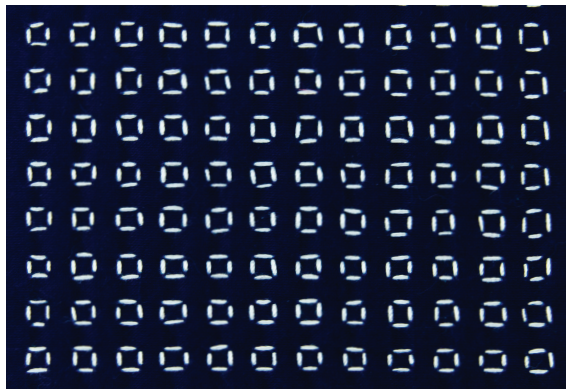
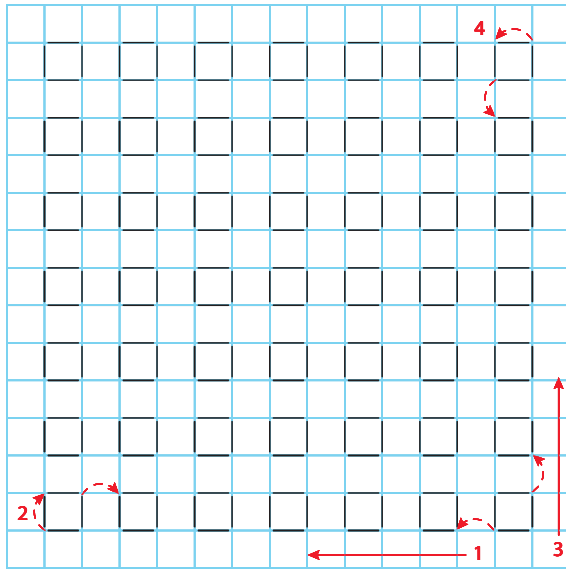
All Versions

Page 89: See attached PDF for an updated “Boxes” illustration.

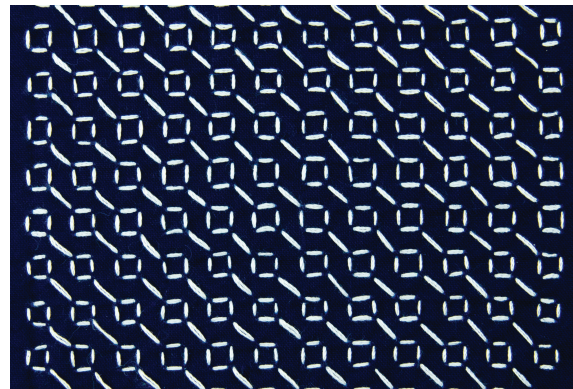
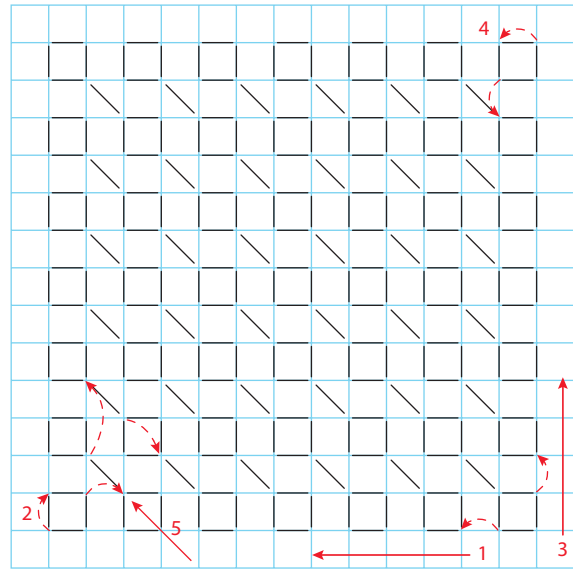
Page 93: See attached PDF for an updated “Stacked Lines Variation” illustration.

Page 161: See attached PDF for an updated “Cutting the back” illustration.

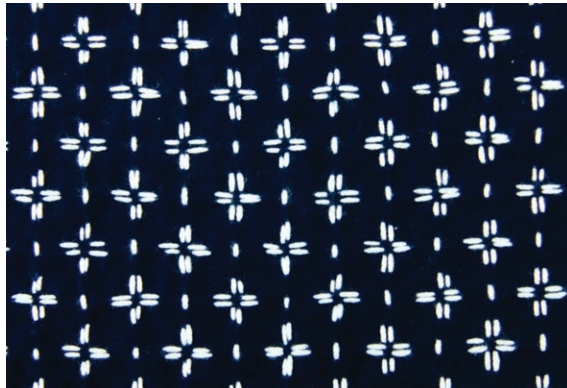
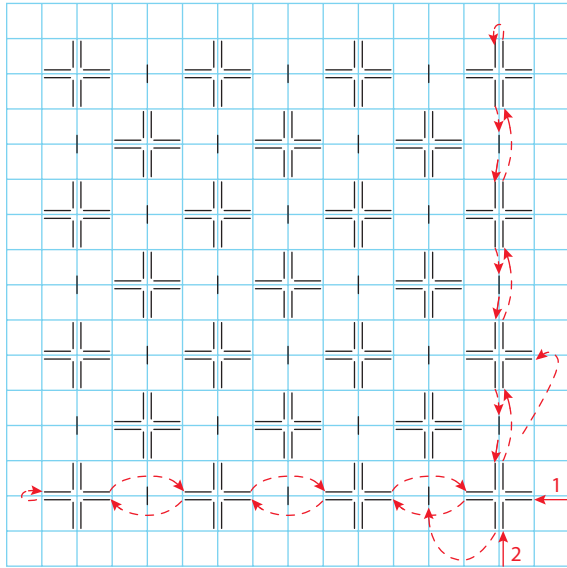
Boxes



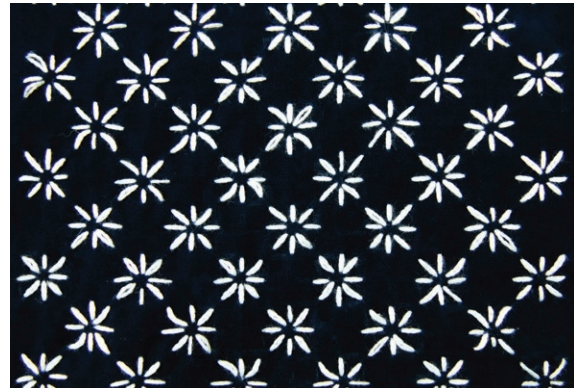
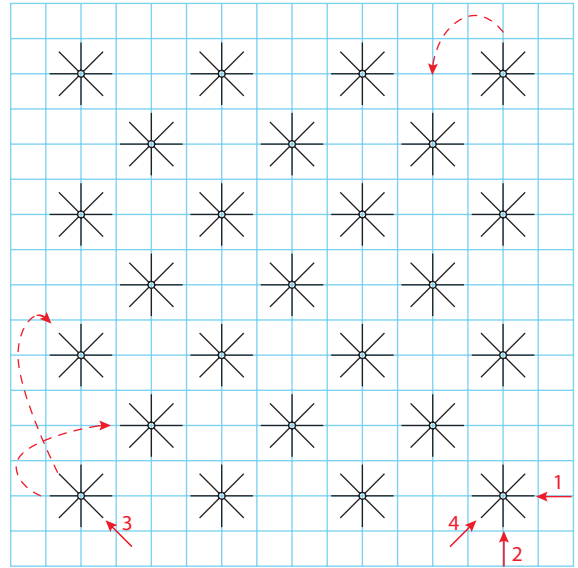
Boxes Variation 1

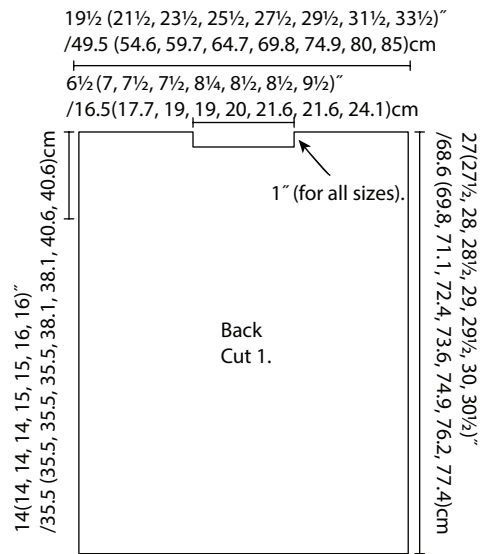


Stacked Lines Variation

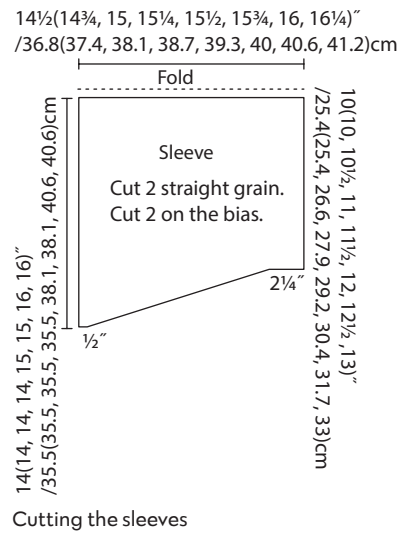


Star Stitch





Cutting the back



	2X	3X	4X	5X
Bust measurement <i>(Use to find your size.)</i>	48" (121.9 cm)	52" (132.1 cm)	56" (142.2 cm)	60" (152.4 cm)
Finished bust	50" (127 cm)	54" (137.2 cm)	58" (147.3 cm)	62" (157.5 cm)
Back panel	27½" × 29" (69.9 × 73.6 cm)	29½" × 29½" (74.9 × 74.9 cm)	31½" × 30" (80 × 76.2 cm)	33½" × 30½" (85 × 77.4 cm)
Front panels	10¼" × 29" (26 × 73.7 cm)	11" × 29½" (27.9 × 74.9 cm)	12" × 30" (30.5 × 76.2 cm)	12½" × 30½" (31.8 × 77.5 cm)
Collar	5" × 52" (12.7 × 132.1 cm)	5" × 53" (12.7 × 134.6 cm)	5" × 53" (12.7 × 134.6 cm)	5" × 55" (12.7 × 139.7 cm)
Sleeves*	15½" × 11½" / 15" (39.4 × 29.2 / 38.1 cm)	15¾" × 12" / 15" (40 × 30.5 / 38.1 cm)	16" × 12½" / 16" (40.6 × 31.8 / 40.6 cm)	16¼" × 13" / 16" (41.3 × 33 / 40.6 cm)
Armhole depth**	15" (38.1 cm)	15" (38.1 cm)	16" (40.6 cm)	16" (40.6 cm)